



# **Green Communities Certification: Process Updates**

October 19, 2022

# Agenda

- WELCOME!
- ORIENTATION + CONTEXT
- OBJECTIVES
- CERTIFICATION PROCESS

## UPDATES

- FEE STRUCTURE
- REVIEW PROCESS
- TOOLS FOR SUPPORT
- Q&A
- WHAT'S NEXT

# Our Goals

We focus on the greatest need – the massive shortage of affordable rental homes – to achieve three goals:



## Increase Housing Supply

Preserve and produce good homes that people can afford



## Advance Racial Equity

After decades of systematic racism in housing



## Build Resilience & Upward Mobility

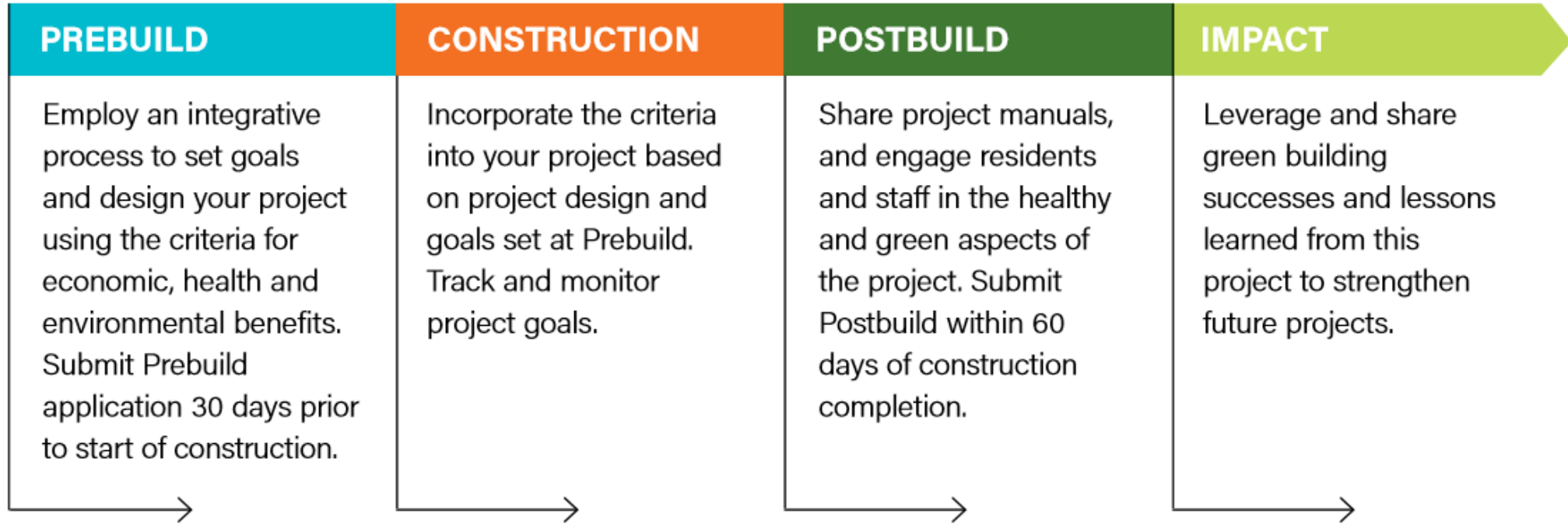
Support residents and strengthen communities to be resilient to the unpredictable



# Objectives

1. OVERVIEW AND KEY DETAILS OF PROCESS UPDATES
2. NEW TOOLS AND RESOURCES TO SUPPORT THROUGH THESE CHANGES
3. IMPLEMENTATION TIMELINE

# Certification Process



# New Approach to Reviews

RE-REVIEW FEE	REVIEW PROCESS	TOOLS FOR SUPPORT
<p>Applications that undergo <b>more than two reviews</b> in a given review phase (pre-build or post-build) will incur a <b>\$200 re-review fee</b>.</p>	<p>Pre and post build applications that meet our <b>minimum requirements will be approved</b>, rather than recalled for clarification on surplus optional points.</p>	<p><b>New tools</b>, such as sample documentation for the 2020 criteria, will be <b>made available</b> on the Green Communities <b>website</b>.</p>



# Re-review fee: overview

## What is the re-review fee?

- **Fee assessed for 2 or more reviews:**  
Applications that undergo **more than one re-review** in one review phase (prebuild or postbuild) will incur a \$200 re-review fee per submission.
- Re-review fees will go into effect November 6th, 2022
- All 2015 and 2020 certification applications
- Signatures tab in the portal before 3<sup>rd</sup> + resubmission...



# Re-review fee: overview



Signature tab



Home Developments - Green Tools & Information

### CERTIFICATION FEE

Certification Review	\$1250 (Paid - 9/15/2022)
<b>Resubmit Certification Review</b>	\$200
Total Fee	\$200

Previous Save Submit for step 1: Prebuild Add Signature

# Re-review Fee Structure - FAQ

## 1. When will the re-review fee be incurred?

- Projects in the midst of a review phase (prebuild or postbuild) will not incur a re-review fee.
- Projects that begin a new review phase (prebuild or postbuild) on or after November 6, 2022 will incur a re-review fee.
- A re-review fee will not apply to projects under review for a waiver request, TA correspondence, or accidental submissions.

## 2. What about NYC expedited reviews?

- Projects eligible for an NYC expedited review are still subject to a re-review fee after two reviews.

# Review process update: overview

## Introducing Itemized Reviews:

- **Non-compliant optional criteria and points not required** for certification (for applicable project type and point threshold), are not flagged as incomplete;
- Project applications that include this condition are **not recalled** with a request for additional information and resubmission.
- Applications are **approved for the respective phase of certification**; Pre-Postbuild.

# Itemized reviews = the new standard review process

The screenshot displays the Enterprise Green Certification interface. At the top, the Enterprise logo is visible. Below it, a navigation bar includes 'Home', 'Developments - Green', and 'Tools & Information'. A green arrow points to the 'Tools & Information' tab, which is labeled 'Criteria compliance tab'. The main content area shows 'Green Certification Details' with a section for 'ACHIEVED OPTIONAL POINTS 50 / POST BUILD'. Below this is a 'GENERAL COMMENT' section with four sub-sections: '1-INTEGRATIVE DESIGN', '2-LOCATION + NEIGHBORHOOD FABRIC', '3-SITE IMPROVEMENTS', and '4-WATER CONSERVATION'. A modal dialog is overlaid on the page, containing the following text: 'All applications for Prebuild and Postbuild will receive an itemized review. Those that demonstrate compliance with all requirements, i.e. fulfillment of applicable mandatory criteria and achievement of minimum optional point thresholds per project type, will be approved. Project teams may opt out of the itemized review and receive a traditional review, in which all non-compliant criteria are flagged for follow-up with the project team.' Below the text are two radio button options: 'Proceed with itemized review' (which is selected and circled in red) and 'Opt-out of itemized review'. A 'Submit Details' button is also circled in red.

# Itemized reviews: definitions

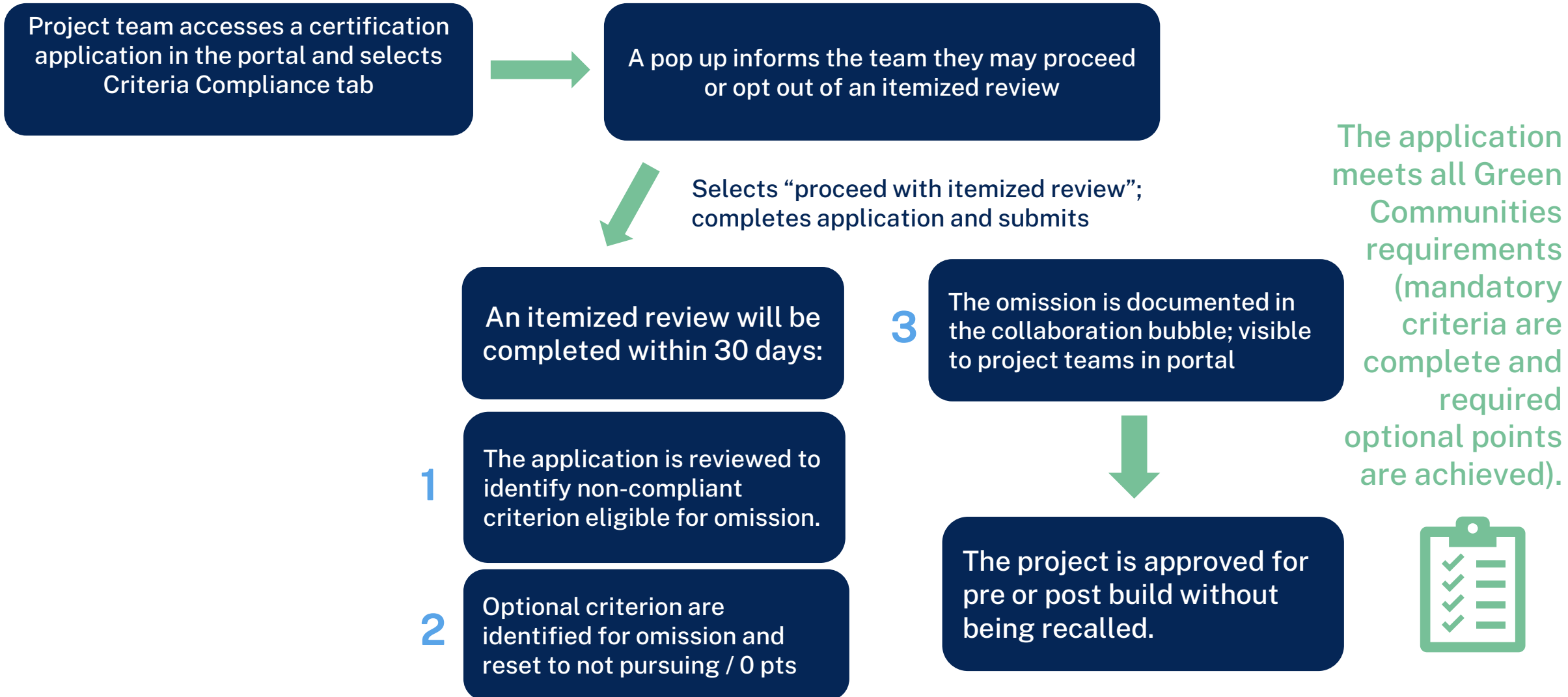
**Traditional Review:** Review of each criterion. Flag any non-compliant criteria for additional follow-up.

**Itemized Review:** Review of each criterion. Flag any non-compliant criteria for possible omission.

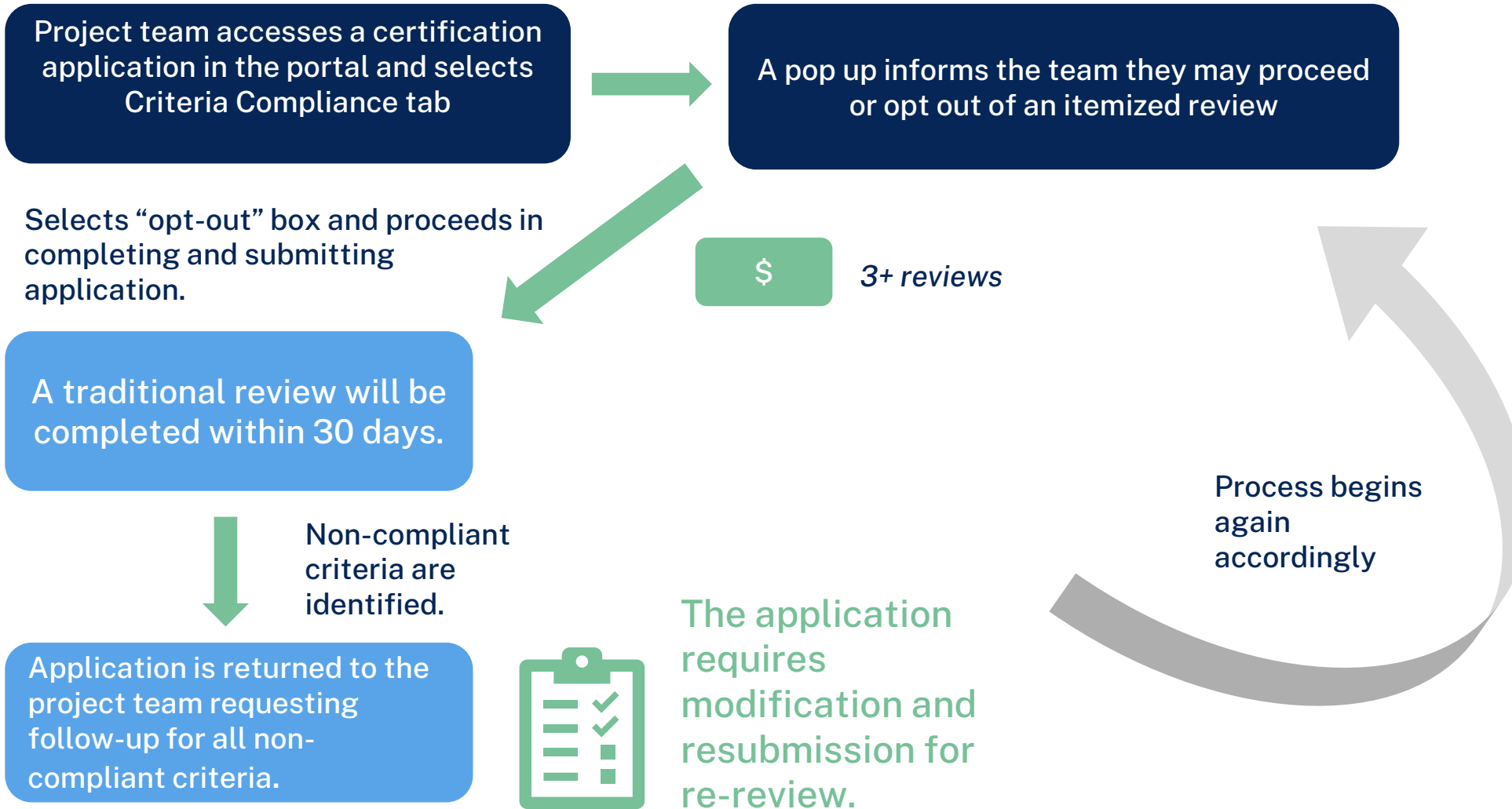
**Surplus points:** Optional points not necessary for required point threshold for certification.

**Omission:** Criteria are eligible for omission if they are optional criterion and contribute to surplus points

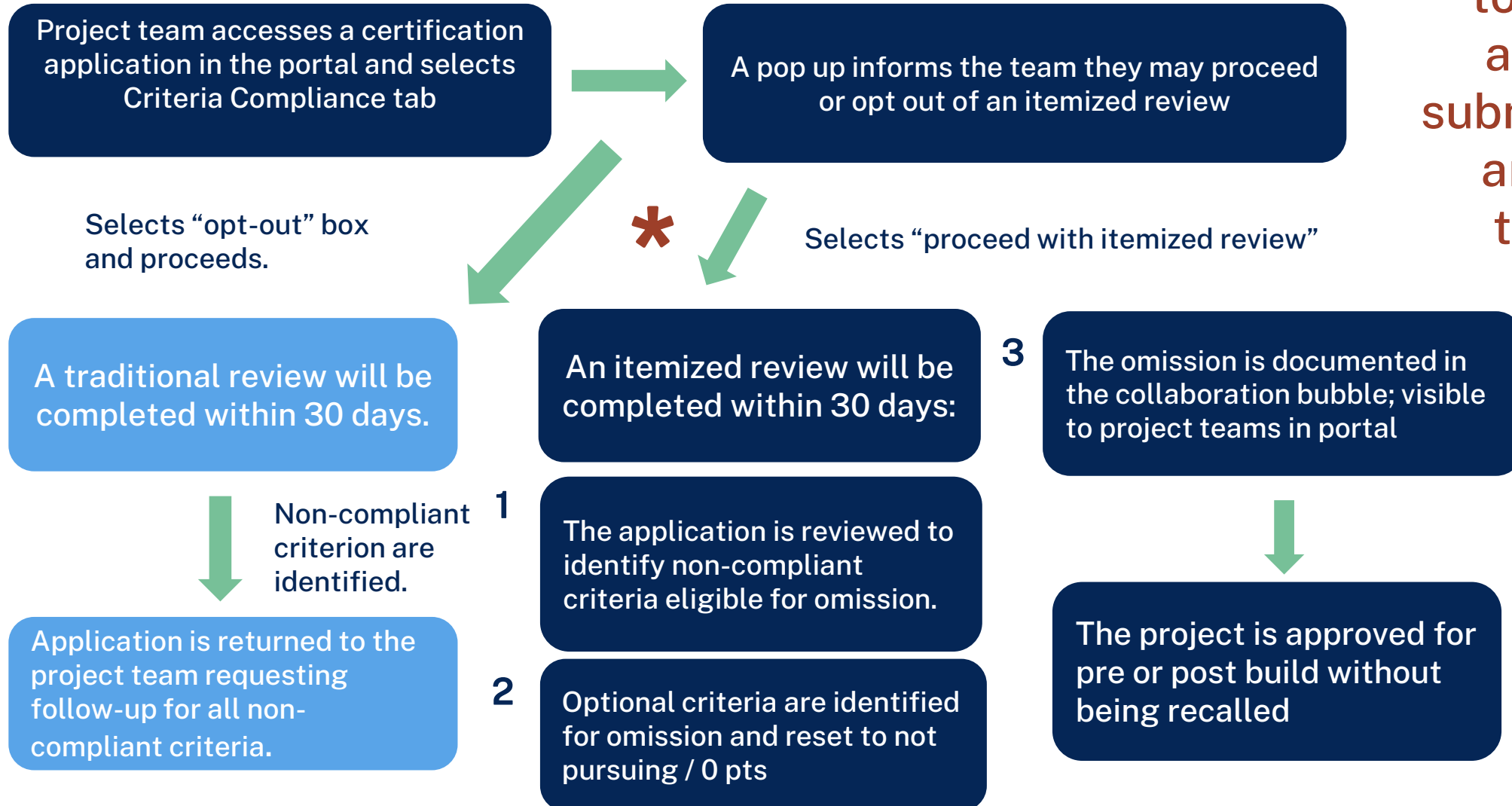
# Itemized review process



# Traditional review process



# Review process update



**\* Both review types are subject to the same applicable submission fees and review timelines.**



# Review Process Update – FAQ's

## 1. Can a project application still undergo a traditional review?

- Yes, the itemized review will become the default but projects can select a traditional review by opting out of the itemized review in the portal. This selection will remain for the full review phase (prebuild or postbuild).

## 2. Why might a project team choose to opt out of an itemized review?

- Funders may require different point totals or optional criteria compliance than the Green Communities requirements. For example, if pursuing

Certification Plus we recommend opting out of an itemized review.

## 3. Can a project earn points at postbuild that were omitted during the prebuild itemized review process?

- If there are optional points the project must earn, it is recommended that the project opt out of the itemized review and select a traditional review. Under some circumstances optional points may be attempted and earned at postbuild, but it is not encouraged.

# Tools for Support

- ✓ Green Communities Portal improvements - **complete**
- ✓ Revise the Certification Documentation Instructions to clarify documentation requirements – **complete**



- ❑ Sample documentation for the 2020 Criteria
- ❑ Monthly Green Communities Office Hours
- ❑ Itemized review process designed to streamline the application approval process

# Tools for Support - FAQs

## 1. Where can I access new tools and resources?

- <https://www.greencommunitiesonline.org>

## 2. When are the monthly month office hours?

- Monday 10/24 3:30-5:00 EST
- Monday 11/14 3:30-5:00 EST
- Monday 12/5 3:30-5:00 EST

## 3. How can I get additional support?

- [Certification@enterprisecommunity.org](mailto:Certification@enterprisecommunity.org)



# Questions?

## Recap

- ✓ what certification process updates are coming and how they'll impact your project applications
- ✓ tools and resources available to support you through these changes

## What's next?

- ✓ Communication reminders
- ✓ November 6<sup>th</sup> – go live!

# Thank You

[certification@enterprisecommunity.org](mailto:certification@enterprisecommunity.org)

